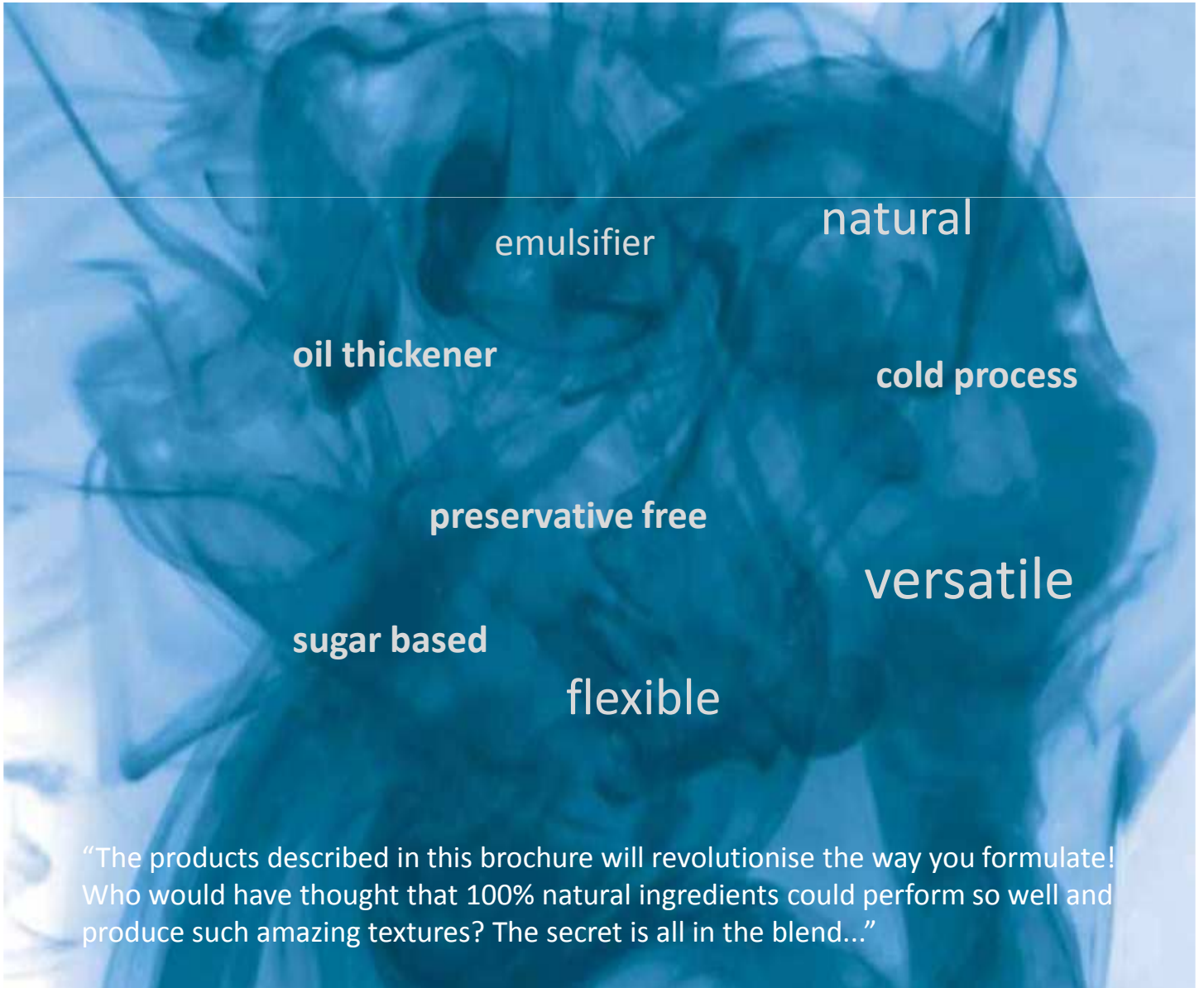




ALFA Chemicals Ltd

Sucragel Formulations Guide



“The products described in this brochure will revolutionise the way you formulate! Who would have thought that 100% natural ingredients could perform so well and produce such amazing textures? The secret is all in the blend...”



Contents

Organic Bath Cream 134 AOF	1
Blooming Bath Oil 001 AOF/CF	2
Multigel to Milk CF	3
Natural Multigel to Milk AOF	4
I Can't Believe it IS Butter! 063 CF	5
Day Cream 049 CF	6
Cold Process Cream 047 AOF/CF	7
Micro-lite Intensive Spray CF	8
Edible Gel 121 CF	9
Fluid Cleanser 128 CF	10
Fossil Salt Scrub 059 AOF	11
Light Lotion 060 CF	12
Nourishing Cream 062 CF	13
Easi-rinse Facial Polish 110 AOF	14
Sparkling Gel 066 CF	15
Butter Mist 130 CF	16
Sugar Scrub 119 AOF	17
Sucragel Contacts	18





Organic Bath Cream

AOF Bio 134



Phase	Ingredient	INCI designation	% w/w	Supplier
A	Sucragel AOF Bio	<i>Glycerin & Prunus Amygdalus Dulcis (Sweet Almond) Oil & Sucrose Laurate & Citrus Aurantium Dulcis (Orange) Fruit Water</i>	15.00	Alfa Chemicals
B	Sunflower Oil Organic	<i>Helianthus Annuus (Sunflower) Seed Oil</i>	30.00	Interaxion
B	Safflower Oil Organic	<i>Carthamus Tinctorius Seed Oil</i>	19.0	Interaxion
B	Cocoa Butter Organic	<i>Theobroma Cacao Seed Butter</i>	6.0	Phoenix Natural Products
C	Surfhope C1215L	<i>Aqua & Sucrose Laurate & Alcohol</i>	20.0	Mitsubishi
C	Glycerin Organic	<i>Glycerin</i>	7.95	Interaxion
D	Lavender Essential Oil Organic	<i>Lavandula Angustifolia herb oil</i>	0.6	Interaxion
D	Geranium essential Oil Organic	<i>Pelargonium Graveolens Flower Oil</i>	0.4	Interaxion
D	Chamomile essential Oil Organic	<i>Anthemis Nobilis Flower oil</i>	0.05	Interaxion
D	Euxyl K700	<i>Phenoxyethanol & Benzyl alcohol & Potassium sorbate & Water & Tocopherol</i>	1.0	Schulke & Mayre

APPEARANCE:

White creamy liquid

MANUFACTURING PROCESS:

Heat phase A to 70°C

Heat phase B in a separate beaker to 70°C

Slowly, add phase B into under propeller mixer at quite a fast speed.

Cool to room temperature.

Stir phase C into the Gel.

Use the homogeniser to mix in phase D.

STABILITY TESTS:

Stable for 1 month at 45°C

This formula is presented in good faith, and we believe it is correct, but no warranty as to accuracy of results, or fitness for a particular use is given, nor is freedom from patent infringement to be inferred. It is offered solely for your consideration, investigation and verification.

©Alfa Chemicals Ltd

Updated on 23/06/2009



Blooming Bath Oil 001 AOF/CF

Phase	Ingredient	INCI designation	% w/w	Supplier
A	Sucragel AOF	<i>Glycerin & Prunus dulcis (Sweet Almond) Oil & Sucrose Laurate & Aqua</i>	99.00	Alfa Chemicals
B	Neroli Essential oil	<i>Citrus aurantium flower oil</i>	0.2	Products
B	Mandarin Essential Oil	<i>Citrus nobilis peel oil</i>	0.5	Products
B	Chamomile Essential Oil	<i>Anthemis nobilis flower oil</i>	0.2	Products
B	Pine Essential Oil	<i>Abies alba needle oil</i>	0.1	Products

APPEARANCE:

Clear yellow liquid.

MANUFACTURING PROCESS:

Add the essential oils to the Sucragel AOF at room temperature using a propeller stirrer.

STABILITY TESTS:

Stable at least 2 months at 45°C

This formula is presented in good faith, and we believe it is correct, but no warranty as to accuracy of results, or fitness for a particular use is given, nor is freedom from patent infringement to be inferred. It is offered solely for your consideration, investigation and verification.

©Alfa Chemicals Ltd

Updated on 14/04/2009



Multigel to Milk CF



Phase	Ingredient	INCI designation	% w/w	Supplier
A	Sucragel CF	<i>Glycerin & Carpylic/Capric Triglyceride & Aqua & Sucrose Laurate</i>	20.0	Alfa Chemicals
A	Surfhope C1616	<i>Sucrose Palmitate</i>	1.5	Mitsubishi
B	Labrafac CC	<i>Caprylic/Capric Triglyceride</i>	77.5	Gattefossé
C	Water	<i>Water</i>	1.0	-

APPEARANCE:

Clear oily gel

MANUFACTURING PROCESS:

Mix together Phase A and heat to 70°C (avoid the hot plate which might heat too much and caramelize the Surfhope).

Heat Phase B in a separate beaker to 70°C .

Start the propeller in Phase A at quite a fast speed and then slowly add Phase B into the mixture.

Adjust the stirring speed upon the viscosity of the gel (it should increase as the oil is added).

Allow cooling down to room temperature and add Phase C.

STABILITY TESTS:

Stable at least 4 months at 45°C.

(Note: the gel turns translucent at 45°C)

This formula is presented in good faith, and we believe it is correct, but no warranty as to accuracy of results, or fitness for a particular use is given, nor is freedom from patent infringement to be inferred. It is offered solely for your consideration, investigation and verification.

©Alfa Chemicals Ltd

Updated on 14/04/2009



Natural Multigel to Milk AOF

Phase	Ingredient	INCI designation	% w/w	Supplier
A	Sucragel AOF	<i>Glycerin & Prunus dulcis (Sweet Almond) Oil & Sucrose Laurate & Aqua</i>	25.0	Alfa Chemicals
B	Olive Oil	<i>Olea europaea (olive) fruit oil</i>	74.9	Provided
B	Natural Vitamin E	<i>Tocopherol</i>	0.1	BTSA

APPEARANCE:

Clear oily gel

MANUFACTURING PROCESS:

Have the Sucragel AOF under the propeller mixer at quite a fast speed.

Mix together phase B. Slowly add Phase B into the Sucragel AOF at room temperature.

Adjust the stirring speed upon the viscosity of the gel (it should increase as the oil is added).

STABILITY TESTS:

Stable at least 3 months at 45°C.

This formula is presented in good faith, and we believe it is correct, but no warranty as to accuracy of results, or fitness for a particular use is given, nor is freedom from patent infringement to be inferred. It is offered solely for your consideration, investigation and verification.

©Alfa Chemicals Ltd

Updated on 14/04/2009



I Can't Believe it IS Butter!

063 CF

Phase	Ingredient	INCI designation	% w/w	Supplier
A	Sucragel CF	<i>Glycerin & Carpylic/Capric Triglyceride & Aqua & Sucrose Laurate</i>	25.0	Alfa Chemicals
A	Surfhope C1616	<i>Sucrose Palmitate</i>	2.0	Alfa Chemicals
B	Shea Butter	<i>Butyrospermum parkii</i>	42.00	ISP
B	Activeshine Amazon	<i>Orbignya speciosa kernel oil & Astrocarium murumuru butter</i>	17.00	Chemyunion
B	Labrafac CC	<i>Caprylic/Capric Triglyceride</i>	13.9	Gattefossé
B	Natural Vitamin E	<i>Tocopherol</i>	0.1	BTSA

APPEARANCE:

Transparent oily gel

MANUFACTURING PROCESS:

Mix together Phase A and heat to 70°C (avoid the hot plate which might heat too much and caramelize the Surfhope).

Mix together Phase B and heat to 70°C

Start the propeller in phase A at quite a fast speed and then very slowly add phase B.

Adjust the stirring speed upon the viscosity of the gel (it should increase as the oil is added).

Cool to room temperature.

STABILITY TESTS:

Stable at least 3 months at 45°C.

This formula is presented in good faith, and we believe it is correct, but no warranty as to accuracy of results, or fitness for a particular use is given, nor is freedom from patent infringement to be inferred. It is offered solely for your consideration, investigation and verification.

©Alfa Chemicals Ltd

Updated on 14/04/2009



Day Cream 049 CF

Phase	Ingredient	INCI designation	% w/w	Supplier
A	Sucragel CF	<i>Glycerin & Carpylic/Capric Triglyceride & Aqua & Sucrose Laurate</i>	6.0	Alfa Chemicals
A	Cetiol 868	<i>Octyl stearate</i>	20.0	Cognis
A	Lanette 16	<i>Cetyl alcohol</i>	2.0	Cognis
A	Alcohol 260	<i>Cetearyl alcohol</i>	1.0	Lasem
A	Chemyforest Cupuacu	<i>Theobroma Grandifolium seed butter</i>	2.0	Chemyunion
A	Natural Vitamin E	<i>Tocopherol</i>	0.1	BTSA
B	Water	<i>Water</i>	65.8	
B	Jaguar HP-105	<i>Hydroxypropyl guar</i>	1.0	Rhodia
B	Rhodicare T	<i>Xanthan gum</i>	0.4	Rhodia
C	Euxyl K700	<i>Phenoxyethanol & Benzyl alcohol & Potassium sorbate & Water & Tocopherol</i>	1.0	Schulke
C	Lemon Secrets	<i>Citrus medica limonum (lemon) fruit extract</i>	0.5	Gattefossé
C	Fashion Soin	<i>Fragrance</i>	0.2	Aromax

APPEARANCE:

White cream

MANUFACTURING PROCESS:

Disperse the gums in the water and heat this mixture up to 70°C.

Mix together phase A and heat up to 70°C.

Add phase A into phase B under a homogeniser.

Keep on stirring until homogeneous.

Cool down to room temperature and finally add phase C.

STABILITY TESTS:

Stable at least 3 months at 45°C.

pH = 5.5

This formula is presented in good faith, and we believe it is correct, but no warranty as to accuracy of results, or fitness for a particular use is given, nor is freedom from patent infringement to be inferred. It is offered solely for your consideration, investigation and verification.

©Alfa Chemicals Ltd

Updated on 14/04/2009



Cold Process Cream 047 CF

Phase	Ingredient	INCI designation	% w/w	Supplier
A	Sucragel CF	<i>Glycerin & Carpylic/Capric Triglyceride & Aqua & Sucrose Laurate</i>	6.0	Alfa Chemicals
A	Cetiol 868	<i>Octyl stearate</i>	20.0	Cognis
A	Natural Vitamin E	<i>Tocopherol</i>	0.1	BTSA
B	Water	<i>Water</i>	70.8	---
B	Jaguar HP-105	<i>Guar gum</i>	1.0	Rhodia
B	Rhodicare T	<i>Xanthan gum</i>	0.4	Rhodia
C	Euxyl K700	<i>Phenoxyethanol & Benzyl alcohol & Potassium sorbate & Water & Tocopherol</i>	1.0	Schulke
C	Lemon Secrets	<i>Citrus medica limonum (lemon) fruit extract</i>	0.5	Gattefossé
C	Fashion Soin	<i>Fragrance</i>	0.2	Aromax

APPEARANCE:

White cream

MANUFACTURING PROCESS: (cold process)

Disperse the gums in the water

Mix together phase A

Add phase A into phase B under the homogeniser.

Keep on stirring until homogeneous.

Finally add phase C.

STABILITY TESTS:

Stable at least 3 months at 45°C.

pH = 5.5

This formula is presented in good faith, and we believe it is correct, but no warranty as to accuracy of results, or fitness for a particular use is given, nor is freedom from patent infringement to be inferred. It is offered solely for your consideration, investigation and verification.

©Alfa Chemicals Ltd

Updated on 14/04/2009



Micro-lite Intensive Spray 135 CF

Phase	Ingredient	INCI designation	% w/w	Supplier
A	Sucragel CF	<i>Glycerin & Carpylic/Capric Triglyceride & Aqua & Sucrose Laurate</i>	5.25	Alfa Chemicals
B	Petroleum Gel	<i>Petrolatum</i>	14.0	Phoenix Natural Products
B	Lanolin Wax	Lanolin Wax	1.50	NK Chemicals
B	Light Liquid Paraffin	<i>Paraffinum Liquidum</i>	14.0	NK Chemicals
C	Water	<i>Aqua</i>	64.31	-
C	Kelcogel® CG-HA	<i>Gellan gum</i>	0.04	CP Kelco
D	Euxyl PE9010	<i>Phenoxyethanol & ethylhexylglycerin</i>	0.60	Schulke & Mayre

APPEARANCE:

White sprayable solution

MANUFACTURING PROCESS:

Heat phase A to 70°C

Heat phase B in another beaker to 70°C.

Start the propeller in the Sucragel CF at quite a fast speed and then add the phase B slowly into the mixture.

Adjust the stirring speed upon the viscosity of the gel (it should increase as the oil is added).

Heat the water to 70°C

Disperse the gellan gum into the water phase using a homogeniser.

Add the gel into the phase C under homogeniser to form a thin white solution.

When cooled add phase D.

STABILITY TESTS:

On Stability at 45°C

This formula is presented in good faith, and we believe it is correct, but no warranty as to accuracy of results, or fitness for a particular use is given, nor is freedom from patent infringement to be inferred. It is offered solely for your consideration, investigation and verification.

©Alfa Chemicals Ltd

Updated on 09/072009



Edible Gel 121 CF



Phase	Ingredient	INCI designation	% w/w	Supplier
A	Sucragel CF	<i>Glycerin & Carpylic/Capric Triglyceride & Aqua & Sucrose Laurate</i>	15.0	Alfa Chemicals
A	Surfhope C1616	<i>Sucrose Palmitate</i>	2.5	Alfa Chemicals
A	Glycerin	<i>Glycerin</i>	17.0	Phoenix Natural Products
B	Grapeseed Oil	<i>Vitis Vinifera (Grape) Seed Oil</i>	65.4	Provided
C	Rosemary Extract	<i>Helianthus Annuus (Sunflower) Seed Oil & Rosmarinus Officinalis (Rosemary) Leaf Extract</i>	0.1	Gattefossé

APPEARANCE:

Translucent yellow/green oily gel

MANUFACTURING PROCESS:

Mix together the phase A and heat to 70°C (avoid the hot plate which might heat too much and caramelize the Surfhope).

Mix together phase B and heat to 70°C

Start the propeller in phase A at quite a fast speed and then slowly add phase B.

Adjust the stirring speed upon the viscosity of the gel (it should increase as the oil is added).

When it has cooled to room temperature add Phase C.

STABILITY TESTS:

Stable at least 2 months at 45°C.

(Note: the gel turns clear at 45°C)

This formula is presented in good faith, and we believe it is correct, but no warranty as to accuracy of results, or fitness for a particular use is given, nor is freedom from patent infringement to be inferred. It is offered solely for your consideration, investigation and verification.

©Alfa Chemicals Ltd

Updated on 14/04/2009



Fluid Cleanser 128 CF



Phase	Ingredient	INCI designation	% w/w	Supplier
A	Sucragel CF	<i>Glycerin & Carpylic/Capric Triglyceride & Aqua & Sucrose Laurate</i>	30.0	Alfa Chemicals
A	Surfhope C1616	<i>Sucrose Palmitate</i>	1.5	Alfa Chemicals
B	Labrafac CC	<i>Caprylic/Capric Triglyceride</i>	67.5	Gattefossé
C	Water	<i>Water</i>	1.0	---

APPEARANCE:

Hazy fluid oily gel

MANUFACTURING PROCESS:

Mix together Phase A and heat to 70°C (avoid the hot plate which might heat too much and caramelize the Surfhope).

Heat Phase B in a separate beaker to 70°C .

Start the propeller in Phase A at quite a fast speed and then slowly add Phase B into the mixture.

Adjust the stirring speed upon the viscosity of the gel (it should increase as the oil is added).

Allow cooling down to room temperature and add Phase C.

STABILITY TESTS:

Stability is being monitored at 45°C

This formula is presented in good faith, and we believe it is correct, but no warranty as to accuracy of results, or fitness for a particular use is given, nor is freedom from patent infringement to be inferred. It is offered solely for your consideration, investigation and verification.

©Alfa Chemicals Ltd

Updated on 14/04/2009



Fossil Salt Scrub 059 AOF



Phase	Ingredient	INCI designation	% w/w	Supplier
A	Sucragel AOF	<i>Glycerin & Prunus dulcis (Sweet Almond) Oil & Sucrose Laurate & Aqua</i>	20.0	Alfa Chemicals
B	Olive Oil	<i>Olea europaea (olive) fruit oil</i>	63.5	Provided
C	Rubies Fossil Salt <0.7mm	<i>Sodium chloride & potassium chloride & magnesium chloride & calcium sulphate</i>	16.0	Gaiamare
C	Sweet Orange Essential Oil	<i>Citrus aurantium dulcis</i>	0.5	Phoenix Natural Products

APPEARANCE:

Thick oily gel containing natural rock salt, pink/orange color (crystals from colorless to red)

MANUFACTURING PROCESS:

Start the propeller in phase A at quite a fast speed and then slowly add phase B into the mixture.

Adjust the stirring speed upon the viscosity of the gel (it should increase as the oil is added). Mix together phase C and stir into the gel.

PROPERTIES:

Body scrub which turns into milk when rinsed off or when used upon wet skin.

STABILITY TESTS:

In progress

This formula is presented in good faith, and we believe it is correct, but no warranty as to accuracy of results, or fitness for a particular use is given, nor is freedom from patent infringement to be inferred. It is offered solely for your consideration, investigation and verification.

©Alfa Chemicals Ltd

Updated on 14/04/2009



Light Lotion 060 CF

Phase	Ingredient	INCI designation	% w/w	Supplier
A	Sucragel CF	<i>Glycerin & Carpylic/Capric Triglyceride & Aqua & Sucrose Laurate</i>	6.0	Alfa Chemicals
A	Cetiol 868	<i>Octyl stearate</i>	20.0	Cognis
A	Lipocire A	<i>Hydrogenated palm kernel glycerides & hydrogenated palm glycerides</i>	5.0	Gattefossé
B	Jaguar HP-105	<i>Hydroxypropyl guar</i>	1.0	Rhodia
B	Rhodicare T	<i>Xanthan gum</i>	0.4	Rhodia
B	Water	<i>Water</i>	66.6	
C	Euxyl K700	<i>Phenoxyethanol & Benzyl alcohol & Potassium sorbate & Water & Tocopherol</i>	1.0	Schulke

APPEARANCE:

White Light Lotion

MANUFACTURING PROCESS:

Mix together Phase A and heat to 70°C.

Disperse the gums in the water and heat to 70°C.

Add phase A to phase B using a homogeniser.

Cool down to room temperature and add phase C

STABILITY TESTS:

Stable at least 5 months at 45°C.

pH = 5.0

This formula is presented in good faith, and we believe it is correct, but no warranty as to accuracy of results, or fitness for a particular use is given, nor is freedom from patent infringement to be inferred. It is offered solely for your consideration, investigation and verification.

©Alfa Chemicals Ltd

Updated on 14/04/2009



Nourishing Cream 062 CF

Phase	Ingredient	INCI designation	% w/w	Supplier
A	Sucragel CF	<i>Glycerin & Carpylic/Capric Triglyceride & Aqua & Sucrose Laurate</i>	10.0	Alfa Chemicals
A	Labrafac CC	<i>Caprylic/Capric Triglyceride</i>	10.0	Gattefossé
A	Lipocire A	<i>Hydrogenated palm kernel glycerides & hydrogenated palm glycerides</i>	5.0	Gattefossé
A	BR Forest	<i>Astrocaryum murumuru butter</i>	5.0	Chemyunion
A	Fancor Abyssinian Oil	<i>Crambe Seed Oil</i>	5.0	Fancor
A	Rice Bran Oil	<i>Oryza Sativa (Rice) Bran Oil</i>	2.0	Fancor
A	Lanette 16	<i>Cetyl alcohol</i>	1.0	Cognis
A	Cutina GMS-SE	<i>Glyceryl stearate SE</i>	1.0	Cognis
A	Natural Vitamin E	<i>Tocopherol</i>	0.1	BTSA
B	Natrasol 250 HHR	<i>Hydroxyethyl cellulose</i>	1.5	Rhodia
B	Rhodicare T	<i>Xanthan gum</i>	0.3	Rhodia
B	Water	<i>Water</i>	57.3	
C	Euxyl K700	<i>Phenoxyethanol & Benzyl alcohol & Potassium sorbate & Water & Tocopherol</i>	1.0	Schülke & Mayr
C	Lemon Secrets	<i>Citrus medica limonum (lemon) fruit extract</i>	0.3	Gattefossé
C	Nirvana Soin ARX/30214	<i>Fragrance</i>	0.5	Aromax

APPEARANCE:

Thick white cream

MANUFACTURING PROCESS:

Disperse the gums of phase B in water.

Heat phases A and B up to 70°C.

Add phase A into phase B using a homogeniser.

Cool down to room temperature under moderate mixing and add phase C

STABILITY TESTS:

Stable at least 3 months at 45°C.

pH = 5.5

This formula is presented in good faith, and we believe it is correct, but no warranty as to accuracy of results, or fitness for a particular use is given, nor is freedom from patent infringement to be inferred. It is offered solely for your consideration, investigation and verification.

©Alfa Chemicals Ltd

Updated on 14/04/2009



Easi-rinse Facial Polish AOF



Phase	Ingredient	INCI designation	% w/w	Supplier
A	Sucragel AOF	<i>Glycerin & Prunus dulcis (Sweet Almond) Oil & Sucrose Laurate & Aqua</i>	25.0	Alfa Chemicals
B	Olive Oil	<i>Olea europaea (olive) fruit oil</i>	72.9	Provided
B	Natural Vitamin E	<i>Tocopherol</i>	0.1	BTSA
C	Olive Exfoliator 500	<i>Olea europea (Olive) seed</i>	2.0	Lessonia

APPEARANCE:

Clear oily gel with small exfoliating particles

MANUFACTURING PROCESS:

Have the Sucragel AOF under the propeller mixer at quite a fast speed.

Mix together phase B. Slowly add Phase B into the Sucragel AOF at room temperature. Adjust the stirring speed upon the viscosity of the gel (it should increase as the oil is added).

Stir in phase C.

STABILITY TESTS:

Stable for at least 3 month at 45°C

This formula is presented in good faith, and we believe it is correct, but no warranty as to accuracy of results, or fitness for a particular use is given, nor is freedom from patent infringement to be inferred. It is offered solely for your consideration, investigation and verification.

©Alfa Chemicals Ltd

Updated on 14/04/2009



Sparkling Gel 066 CF

Phase	Ingredient	INCI designation	% w/w	Supplier
A	Sucragel CF	<i>Glycerin & Carpylic/Capric Triglyceride & Aqua & Sucrose laurate</i>	20.0	Alfa Chemicals
A	Surfhope C1616	<i>Sucrose Palmitate</i>	1.5	Alfa Chemicals
B	Cetiol 868	<i>Octyl stearate</i>	77.0	Cognis
C	Nirvana Soin ARX/30214	<i>Fragrance</i>	0.5	Aromax
C	Flamenco Sparkle Gold 220J	<i>Mica & Titanium dioxide</i>	0.5	BASF
C	Timica Extra Large Sparkle 110S	<i>Mica & Titanium dioxide</i>	0.5	BASF

APPEARANCE:

Sparkling oily gel

MANUFACTURING PROCESS:

Mix together phase A and heat to 70°C (avoid the hot plate which might heat too much and caramelize the Surfhope).

Heat the Cetiol 868 up to 70°C in a separate beaker.

Start the propeller in phase A at quite a fast speed and then add the Cetiol 868 slowly into the mixture.

Adjust the stirring speed upon the viscosity of the gel (it should increase as the oil is added).

Allow cooling down to room temperature and stir in phase C.

STABILITY TESTS:

Stable at least 3 months at 45°C.

This formula is presented in good faith, and we believe it is correct, but no warranty as to accuracy of results, or fitness for a particular use is given, nor is freedom from patent infringement to be inferred. It is offered solely for your consideration, investigation and verification.

©Alfa Chemicals Ltd

Updated on 14/04/2009



Butter Mist 130 CF

Phase	Ingredient	INCI designation	% w/w	Supplier
A	Sucragel CF	<i>Glycerin & Carpylic/Capric Triglyceride & Aqua & Sucrose Laurate</i>	8.00	Alfa Chemicals
B	Shea Butter	<i>Butyrospermum parkii</i>	13.34	ISP
B	Activeshine Amazon	<i>Orbignya speciosa kernel oil & Astrocarium murumuru butter</i>	5.00	Chemyunion
B	Labrafac CC	<i>Caprylic/Capric Triglyceride</i>	4.00	Gattefossé
C	Water	<i>Aqua</i>	68.70	-
C	Kelcogel® CG-HA	<i>Gellan gum</i>	0.06	CP Kelco
D	Euxyl K700	<i>Phenoxyethanol & Benzyl alcohol & Potassium sorbate & Water & Tocopherol</i>	0.90	Schulke

APPEARANCE:

White sprayable solution

MANUFACTURING PROCESS:

Heat phase A to 70°C

Heat phase B in another beaker to 70°C.

Start the propeller in the Sucragel CF at quite a fast speed and then add the phase B slowly into the mixture.

Adjust the stirring speed upon the viscosity of the gel (it should increase as the oil is added).

Heat the water to 70°C

Disperse the gellan gum into the water phase using a homogeniser.

Add the gel into the phase C under homogeniser to form a thin white solution.

When cooled add phase D.

STABILITY TESTS:

Stable for at least 1 month at 45°C

This formula is presented in good faith, and we believe it is correct, but no warranty as to accuracy of results, or fitness for a particular use is given, nor is freedom from patent infringement to be inferred. It is offered solely for your consideration, investigation and verification.

©Alfa Chemicals Ltd

Updated on 09/072009



Sugar Scrub 119 AOF



Phase	Ingredient	INCI designation	% w/w	Supplier
A	Sucragel AOF	<i>Glycerin & Prunus dulcis (Sweet Almond) Oil & Sucrose Laurate & Aqua</i>	15.0	Alfa Chemicals
B	Sunflower Oil	<i>Helianthus Annuus (Sunflower) Seed Oil</i>	50.0	Provided
C	Crystallized Sugar	<i>Sucrose</i>	35.0	Provided

APPEARANCE:

Thick oily gel containing crystallized sugar

MANUFACTURING PROCESS:

At room temperature start the propeller in the Sucragel AOF at quite a fast speed then add the sunflower oil slowly into the Sucragel AOF.

Adjust the stirring speed upon the viscosity of the gel (it should increase as the oil is added). Then add then the crystallized sugar under stirring.

PROPERTIES:

Body scrub which turns into milk when rinsed off or when used upon wet skin.

STABILITY TESTS:

Stable for at least 1 month at 45°C

This formula is presented in good faith, and we believe it is correct, but no warranty as to accuracy of results, or fitness for a particular use is given, nor is freedom from patent infringement to be inferred. It is offered solely for your consideration, investigation and verification.

©Alfa Chemicals Ltd

Updated on 14/04/2009



Contacts

Caroline Recardo
Head of Cosmetics

Julian Borrill
Sales & Business Development

Jennifer Watts
Formulation Development

Nicola Bowyer
Marketing & Sales Support

Julie Lee
Samples & Order Processing

Tel: +44 1344 397755

Email: sucragel@alfa-chemicals.co.uk

Alfa Chemicals Ltd, Arc House, Terrace Road South,
Binfield, Berkshire, RG42 4PZ, UK.